



Ruben

# DREAM CARAVAN



C R U S A D E R 2 0 2 5

# STANDOUT

---

**LIFECHANGER**

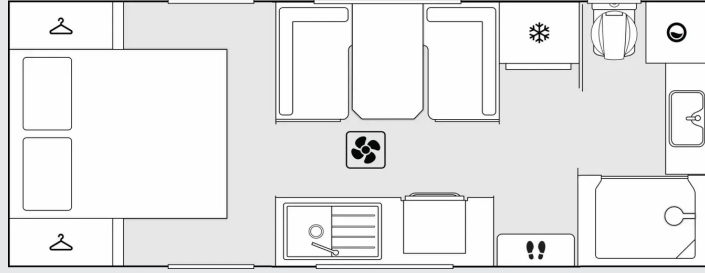
**REDEFINING AFFORDABLE LUXURY**

[www.crusadercaravans.com.au](http://www.crusadercaravans.com.au)

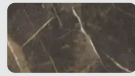




# Ruben DREAM CARAVAN



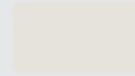
Platinum Oak



Marmo Carnico



NX630 Ash Matt



NX630 Ash Matt



Vegas Cement

## LIFECHANGER PASSAGE

SELECTED OPTIONAL BUNDLES	
X - TERRAIN UPGRADE BUNDLE	\$36,300.00
BLACK PACK UPGRADE BUNDLE	\$0.00
SELECTED OPTIONAL UPGRADES	
<b>Toolboxes:</b> Add more storage with a variety of toolbox options.	\$0.00
<b>Solar:</b> Power your adventures with our solar panel options.	\$0.00
<b>Battery:</b> Upgrade your battery system for longer off-grid stays.	\$0.00

## PRICE BREAKDOWN

Base price	<b>\$72,405.00</b>
Upgrade options	<b>\$36,300.00</b>
<b>Estimated total build price</b>	<b>\$108,705.00</b>

RRP Prices shown are indicative only and may vary depending on specific bundles and options selected. Please contact your local dealer for an accurate quote. The caravan configuration tool is intended for informational purposes only and may not reflect all available options or potential customisations. Please consult with your local dealer to discuss your specific needs and preferences. RRP including all costs except State Registration. RRP Pricing is correct as at the date of publication and it is subject to change. All prices listed are in Australian dollars and are applicable to purchases within Australia. For international inquiries or purchases, please contact your local Crusader Caravans distributor.



# LIFECHANGER

## REDEFINING AFFORDABLE LUXURY



### A premium, accessible full composite caravan range for a relaxed journey.

The Lifechanger range is designed for those seeking a convenient lifestyle and exceptional value. Ideal for families and adventurers seeking new experiences, it's perfect for weekend getaways at caravan parks or nature reserves.



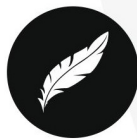
Australian Made



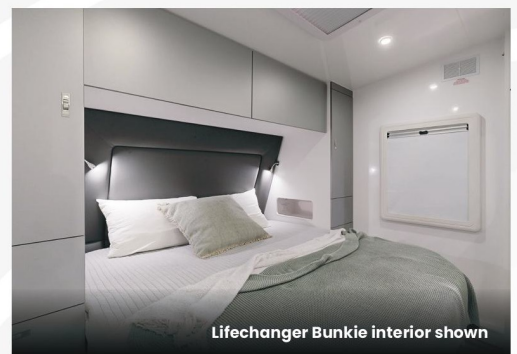
FULL Composite



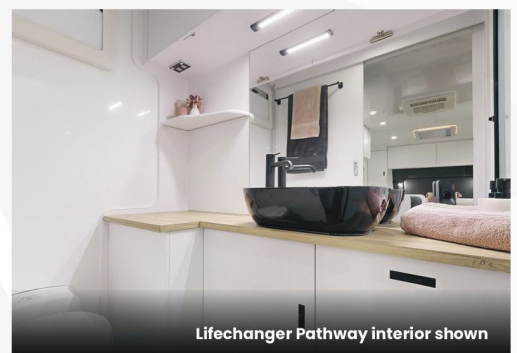
Thermal Efficient



Light Weight



Lifechanger Bunkie interior shown



Lifechanger Pathway interior shown

"Absolutely the finest caravan on the market. When you look at others around the same price range there are so many quality features that stand out on a Crusader Caravan. They are built with love and built to last and once you've had one you won't want anything else".

Dean Rogers - Crusader owner



# WINNER MANUFACTURER OF THE YEAR



## FLOORPLAN KEY ELEMENTS

---



\*Indicative lengths and weights are for standard configuration, any additional options or variations will increase weights. Weights are approximate only and can vary between individual caravans. The Compliance Plate specifies the accurate weight for each respective caravan. Alterations to designated ATM may be requested at the time of order provided it does not exceed the legal maximum and is subject to the final tare weight. Floor length is the external total length of the caravan's floor. Overall width is measured externally and includes all protruding fixtures.

# STANDARD FEATURES

**LIFECHANGER**

Discover the standard features that define the XCountry range, showcasing key specifications and standout qualities.

CHASSIS & BUILD

APPLIANCES

DOORS

ELECTRICAL

EXTERNAL

MISCELLANEOUS

WATER & GAS

UPHOLSTERY

Disclaimer: Crusader Caravans reserve the right to alter specifications without notice. Specifications may vary subject to availability and E&OE (Errors & Omissions Excepted). Images shown are for representation purposes only.

[www.crusadercaravans.com.au](http://www.crusadercaravans.com.au)



MY25V1 17/04/2025